

LEEDS SPECTRAL VISION SYSTEM

LSV2

ALTERNATE LIGHT SOURCE
IMAGING TOOL



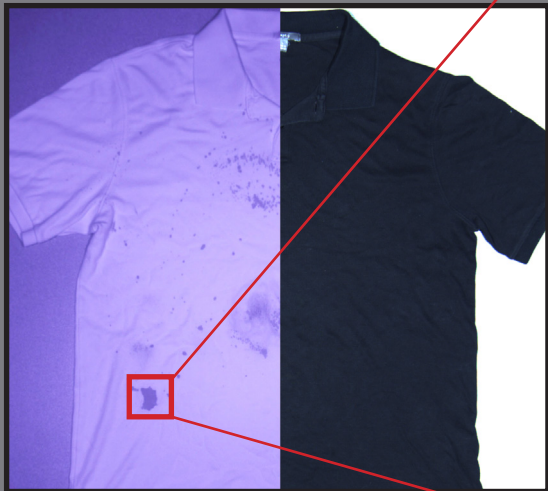
Introducing the next generation digital ALS system, the LSV2 Leeds Spectral Vision System. The LSV2 is a multi-wavelength imaging tool used to rapidly view, capture, and document bodily fluids, victim bruising and bite marks, trace evidence, accelerants, explosives, and gunshot residue on various types of samples.

Designed to significantly enhance the forensic laboratory's ALS screening capabilities, the LSV2 offers:

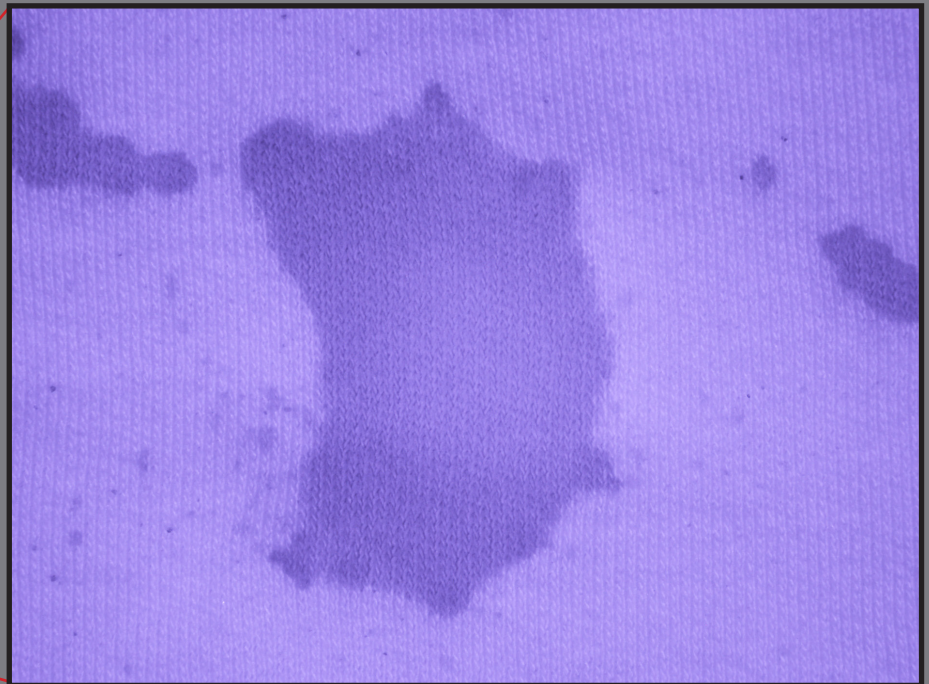
- **Sensitivity:** Highly sensitive camera offers sensitivity equal to and greater than the human eye in fluorescence and near infrared.
- **Ease-of-use:** High throughput screening and documentation does not require advanced photography experience.
- **Highly variable field of view and working distance:** Enormous versatility in screening and documentation of wide varieties of evidence.



Learn how the LSV2 can enhance the screening capability of your forensic lab by visiting www.leedsforensics.com.



LSV2 detects blood spatter on black polo in near infrared with a wide field-of-view range.




LEEDS
FORENSIC SYSTEMS
Your Forensic Imaging Source

LEEDS FORENSIC SYSTEMS, INC.
17300 MEDINA ROAD, SUITE 600
MINNEAPOLIS, MN 55447
800-444-5333
+ 1-763-546-8575
WWW.LEEDSFORENSICS.COM

LSV2 CAPABILITIES

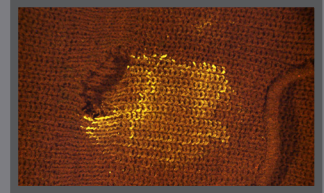
HIGHLY SENSITIVE AND EFFICIENT SCREENING SYSTEM

With its high sensitivity to both visible and near infrared light, the LSV2 provides real-time screening and documentation (up to 40 frames per second) at full resolution with a sensitivity to light equal to and greater than the human eye. Designed for rapid screening, the LSV2 documentation process is intuitive and user friendly with easy to perform photo capture capabilities. The LSV2's real-time, high resolution, "live" image takes the guess work and long camera delays out of image capture.

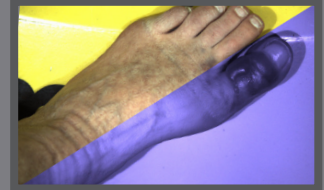
The LSV2 utilizes newly-developed, wavelength specific, high energy LED lights offering greater light density. When paired with the chromatically correct optical zoom system, the LED lights allow examiners to screen and document large overviews exceeding a field of view of 26" down to small examinations of samples encompassing a field of view as small as 1".

The LSV2 preset and applicable metadata capabilities allow for rapid changing between commonly used screening settings. Unlimited presets are effortless to create and provide a powerful tool for examiners, offering rapid repeat control of all settings of the LSV2 head from filter and excitation light to zoom, aperture, focus, and diopter settings.

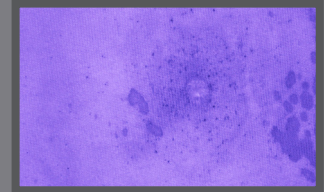
Leeds Vision 4.0 Software offers numerous improvements including additional annotation functionality, expanded preset capabilities, dual-comparison drawing, and multiple language support. Metadata for all camera settings and software functions can be saved in standard image formats (JPEG, TIFF, PNG, BMP). Leeds Vision Software is license free and can be installed on existing computers to view LVI formatted images, freeing up the LSV2 for screening purposes.



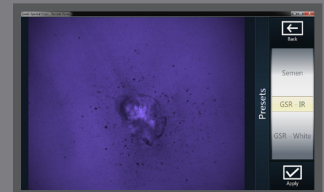
Saliva on a navy blue knit cap



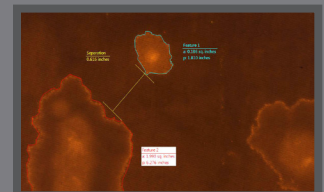
Victim Bruising



Gunshot residue



Leeds Vision Software presets



Semen with annotation



Mobile workstation with compact footprint

LSV2 Filter	
5 position filter cassettes:	550 nm
	570 nm
	610 nm
	830 nm
	400 nm
Exchangeable five position barrier filter cartridge system	

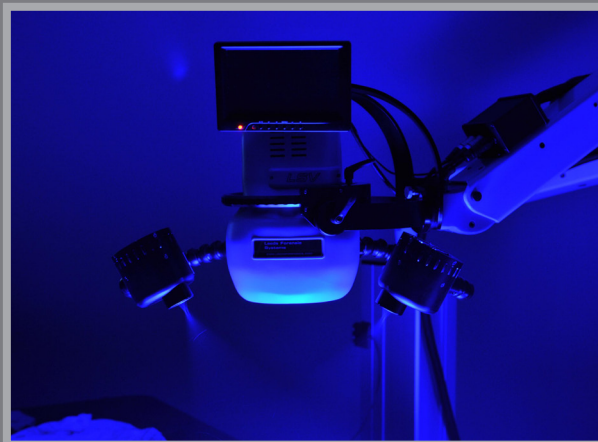
Both Filter and LED Lighting are fully motorized

Multi-wavelength LED Lighting	
Ultraviolet (UV)	365 nm
Violet	400 nm
Blue	455 nm
Green	528 nm
Orange	590 nm
Near Infrared	850 nm
White Bandwidth	400-700 nm
Color Temperature	5600 K

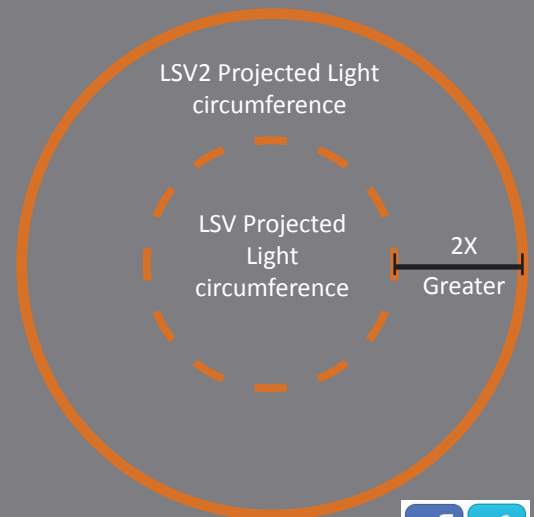
LSV2 Rollable Stand



LSV2 ceiling and wall mount also available



The LSV2 has twice as great projected light circumference as the first generation LSV.



LEEDS FORENSIC SYSTEMS, INC.

17300 MEDINA ROAD, SUITE 600 | MINNEAPOLIS, MN 55447 | 800-444-5333 | WWW.LEEDSFORENSICS.COM



CRIME SCENE AREA DO NOT ENTER CRIME SCENE